

Codafile Door Slat Colours



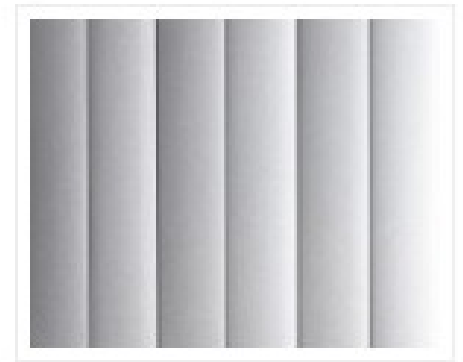
White



Light Grey



Charcoal



Metallic Silver

Codafile Colour Chart

Standard Colour Range

Brights



Lemon Yellow (Gloss)



Safety Yellow (Gloss)



Orange x1.5 (Gloss)



Signal Red (Gloss)



Flame Red (Gloss)



Blaze Blue (Gloss)



Pommel Blue (Gloss)



Navy (Gloss)



Dark Violet (Gloss)



Mistletoe (Gloss)

Standard Colour Range

Traditional



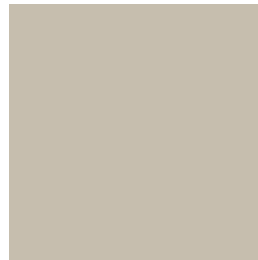
Oyster (Matt)



Anotec Silver Grey (Matt)



APO Grey (Satin)



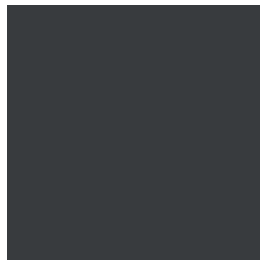
Light Grey (Gloss)



Notre Dame (Gloss)



Ironstone (Satin)



Charcoal (Satin)



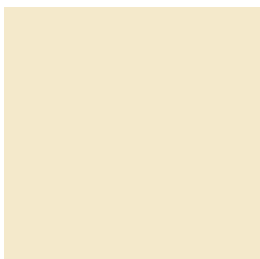
Black Satin (Satin)



Black Matt (Matt)



Doeskin (Satin)



Canola Cream (Gloss)



Magnolia (Gloss)



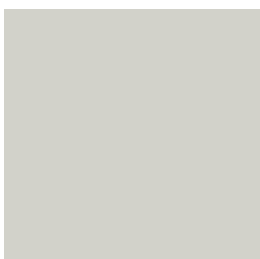
Rivergum Beige (Gloss)



Wedgewood (Satin)



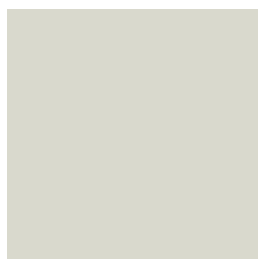
Blue Ridge (Satin)



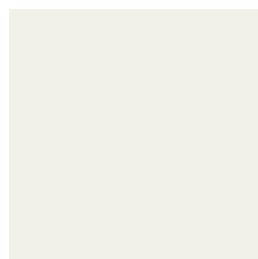
Surfmist (Satin)



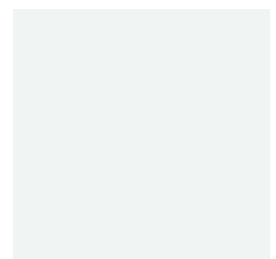
White Birch (Gloss)



Off White (Satin)



White Satin (Satin)



Pearl White (Gloss)

Standard Colour Range

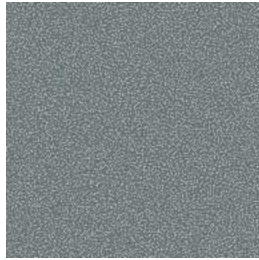
Precious® (Pearlescent Finish)



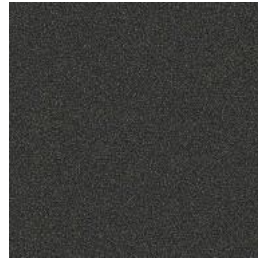
Nickel Pearl (Matt)



Citi Pearl (Matt)

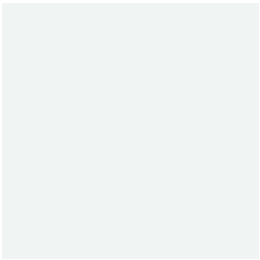


Silver Kinetic Pearl (Satin)

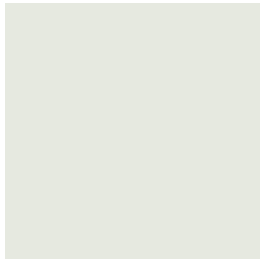


Gunmetal Kinetic Pearl (Satin)

Textura® (Fine Textured Finish)



White



Surfmist



Dune



Silver



Black

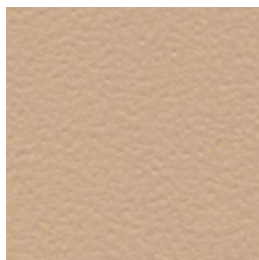
Scylla® (Ripple Finish)



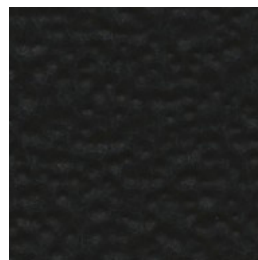
APO Grey (Gloss)



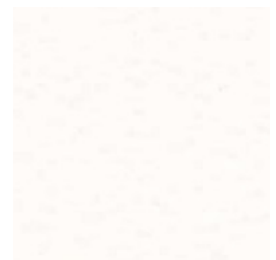
Notre Dame (Gloss)



Stone Beige (Gloss)



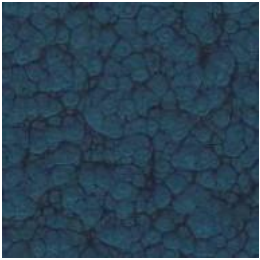
Black (Gloss)



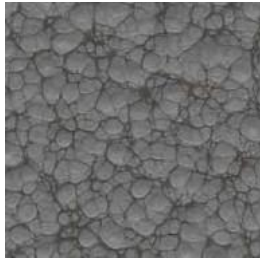
Horizon White (Gloss)

Standard Colour Range

Hammer® (Two-Tone Ripple Finish)

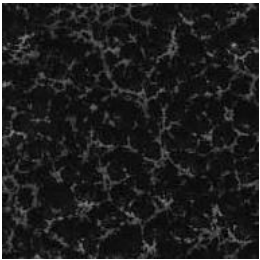


Blue (Gloss)



Grey (Gloss)

Aztec® (Two-Tone Ripple Finish)



Silver (Gloss)

Premium Colour Range

* The following colours are available at an additional charge over Codafile's Standard Colour Range.

* Minimum quantity of 10 lockers.

Electro® (Shimmer Finish)

A unique anodised look, designed to subtly change in appearance as light conditions change.



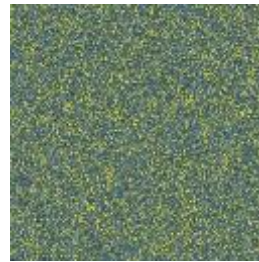
Canary (Flat)



Fred (Flat)



Blueit (Matt)



Blue Gold (Flat)



Poypole (Flat)

Sablé™ (Fine Textured Finish)

Sablé Core Ten mimics the textured, rustic and distinctive appearance of corten steel.



Core Ten

Clear Coat (Matt)

Products using Clear Coat will show blemishes and marks from production processes which are fully visible. Variations in material and components are normal and form part of the overall effect. The product has visible weld marks, witness marks (fold and scratch marks from the manufacturing process) and may have traces of rust which is part of the industrial aesthetic and does not affect the quality of the material or its function. Each product will vary and have its own unique characteristics.

* Minimum quantities apply.



Clear Coat (Matt)

Please Note: Some variations in colour may occur due to differences in screen resolution and therefore should be used as a guide only.