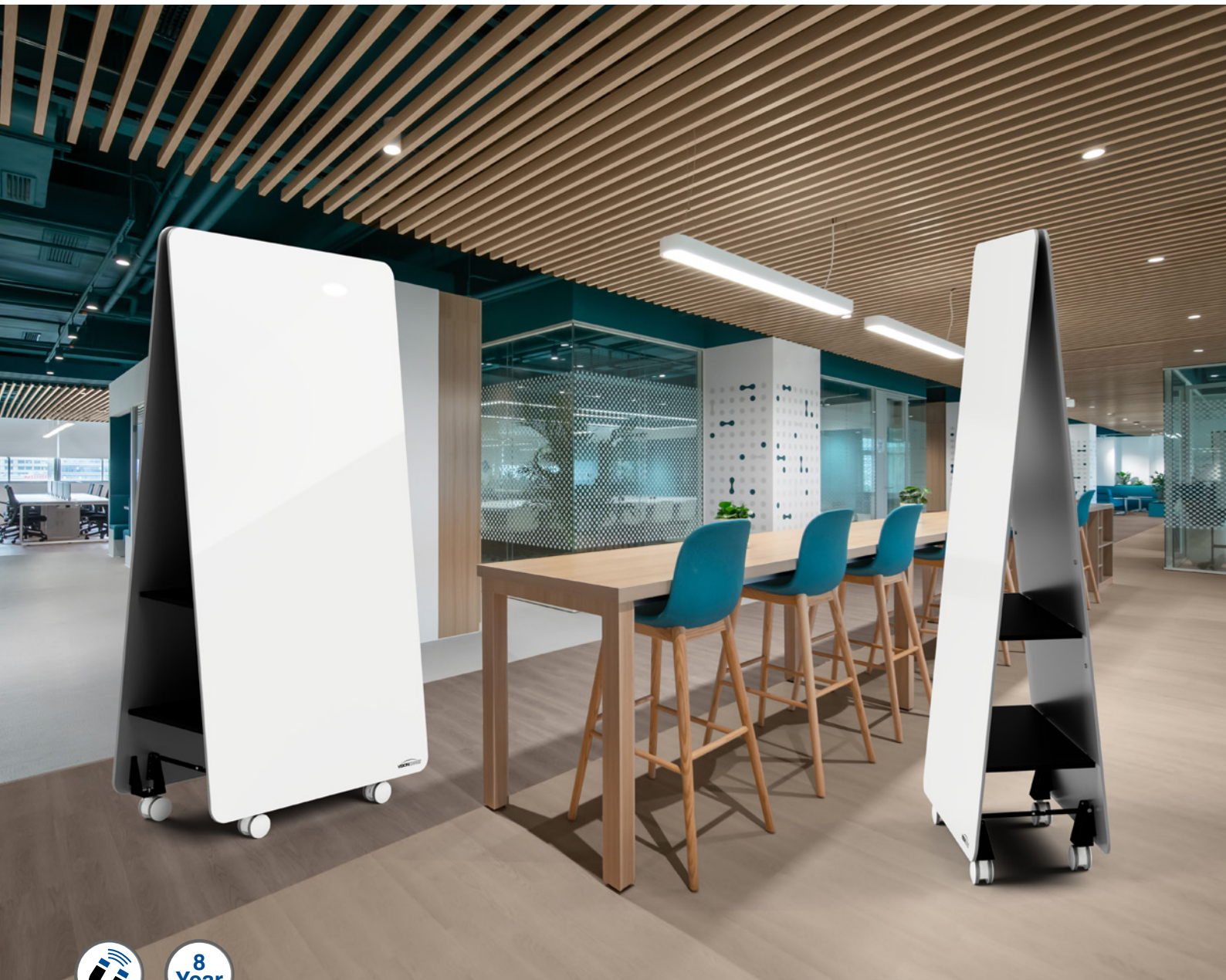
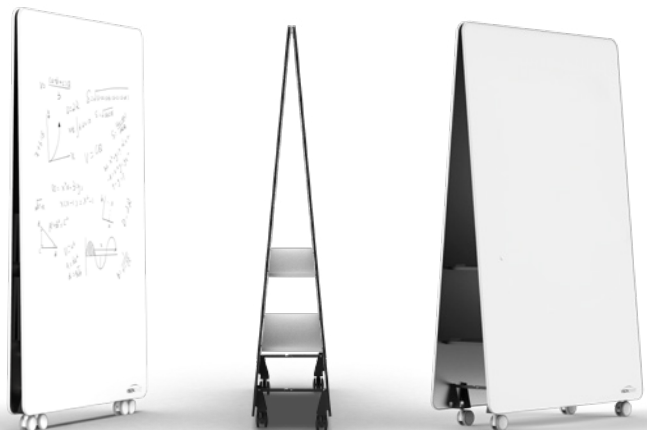


JART Mobile A-Frame Double-Sided Whiteboard



The JART mobile whiteboard delivers a double-sided magnetic surface, concealed storage, and low-profile mobility—ideal for modern offices, collaboration zones or education.

Minimalist in design, practical in execution.

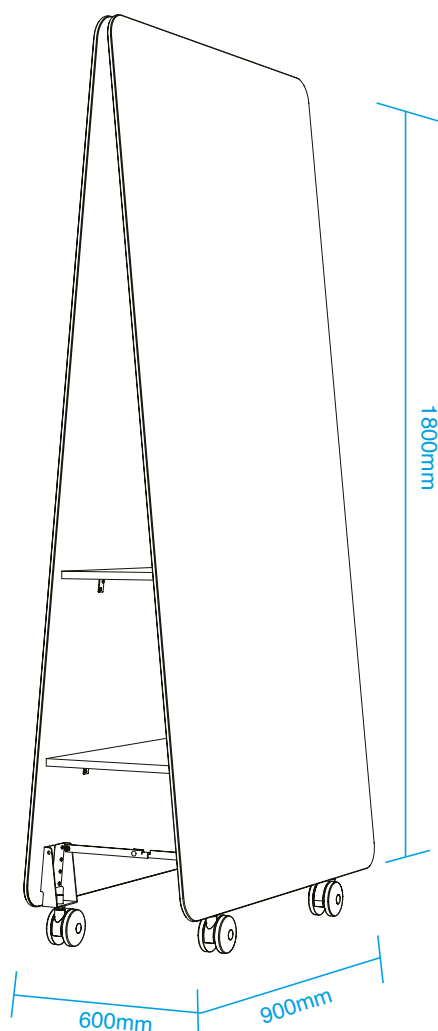


JART Mobile A-Frame Double-Sided Whiteboard



- Double-sided magnetic surface with 8-year warranty
- Two internal metal shelves for markers and storage
- Lockable, low-profile castors for smooth, secure mobility
- Clean, contemporary look for modern spaces
- Ships flat-packed, simply attach the wheels and unfold

Code	Dimensions (mm)
JART1890	1800H x 900W x 600D



Low-profile castors, two are lockable



Two folding internal storage shelves



Easy folding for storage



Stable A-frame design



NSW Head Office

5 Liberty Rd,
Huntingwood,
NSW 2148

QLD

17 Moonbi Street,
Brendale,
QLD 4500

VIC

8 Lara Way,
Campbellfield
VIC 3061

WA

47 Abbott Road,
Perth Airport
WA 6105

NZ

49 Station Rd,
Papatoetoe, Auckland
NZ 2025