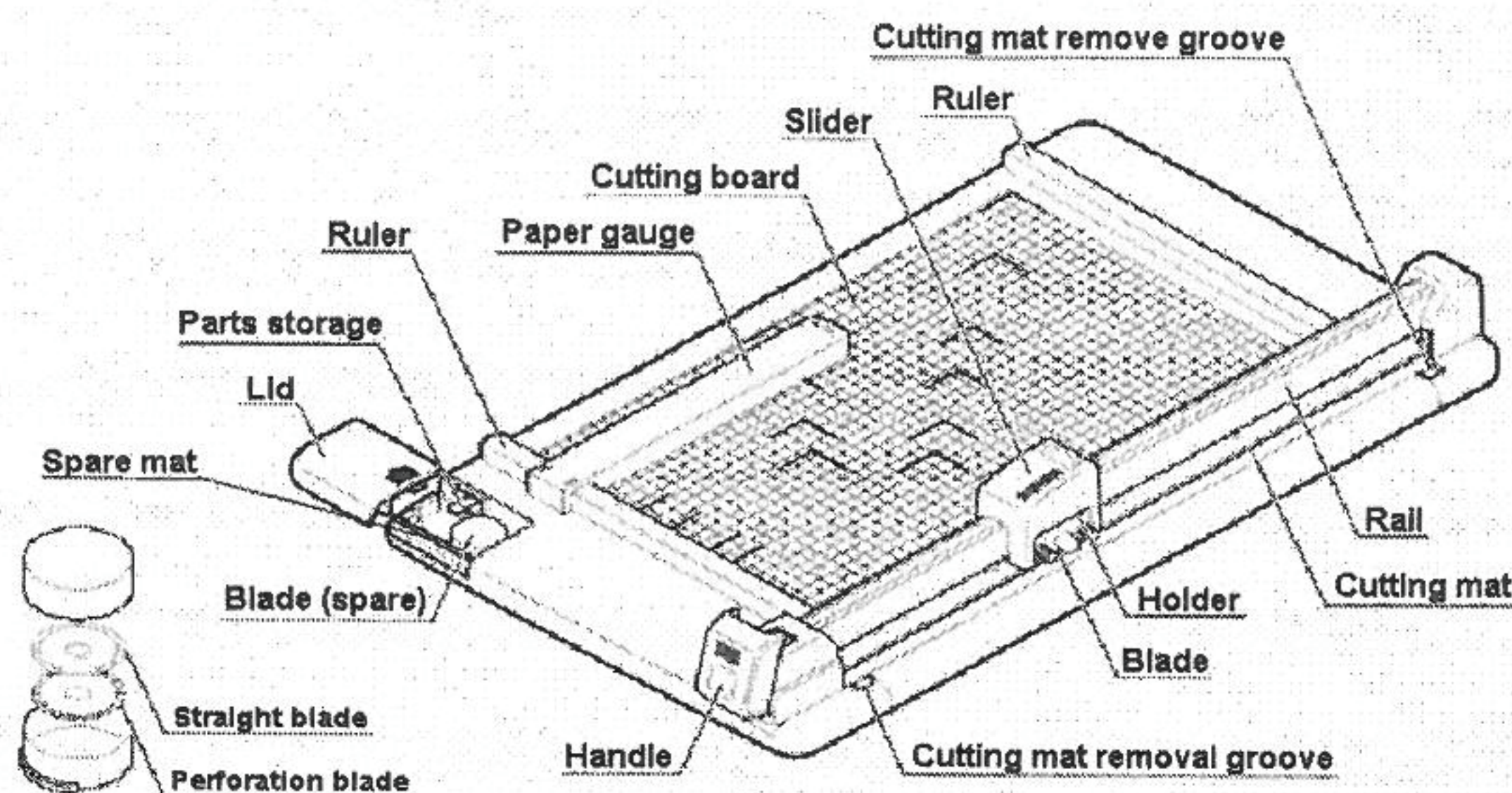


# CARL PAPER TRIMMER

SAFE, PRECISE AND EFFICIENT

Thank you for purchasing a "Carl" paper trimmer. Before using it, please read these instructions thoroughly. Then, please keep the instructions and refer to them when necessary.



## ■ STANDARD PARTS FOR DC-210, DC-220, DC-230 & DC-250

Straight blade (K-28)	2 pcs.
Perforation blade (K-29)	1 pcs.
Cutting mat	2 pcs.

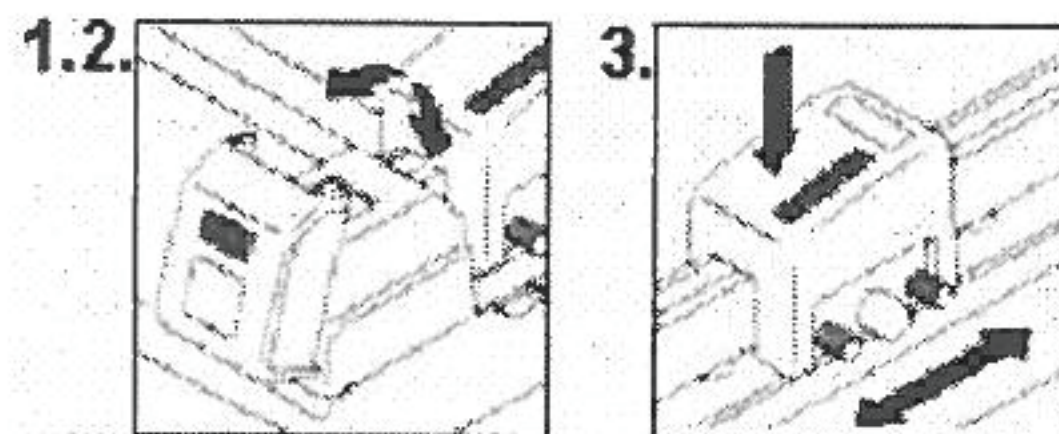
## [Functions]

1. Magnetic paper gauge holds paper securely on calibrated metal board containing reference marks for quick paper positioning.
2. When cutting with the perforation cutting blade, do not cut more than 3 sheets and do not make a return-trip cut with the slider.
3. The straight cutting blade can cut materials other than paper. Use the table below as a guide.  
(When cutting a soft material, place a sheet of paper underneath the materials to be cut.)

CARDBOARD	SOFT VINYL	HARD VINYL	PP FILM
Up to 1 mm	Up to 0,8 mm	Up to 0,4 mm	Up to 0,4 mm

## [How to use]

1. Pull back handle which raises rails and slider.
2. Set material to be cut in position and handle to LOCK position.
3. Slide the slider while pressing it down.

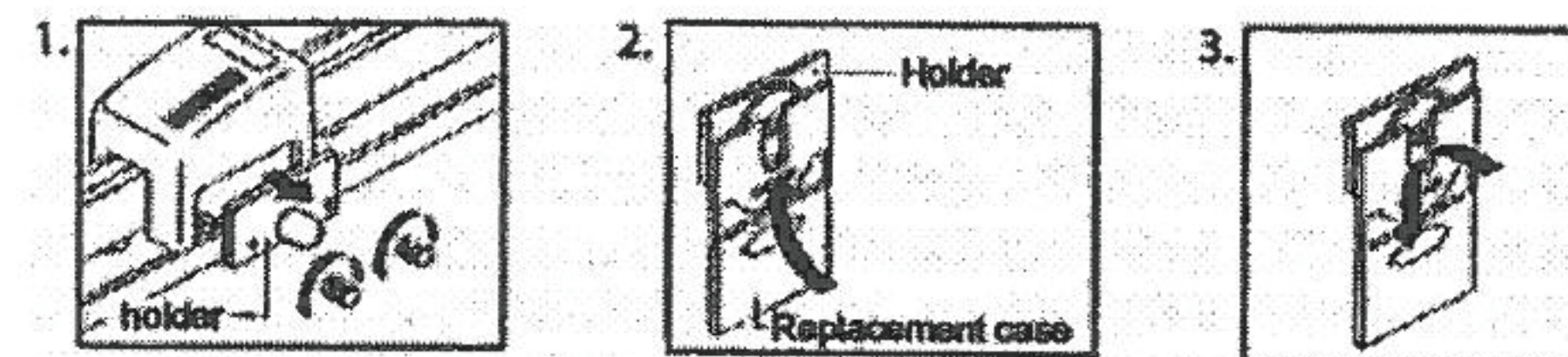


## [Replacement of cutting mat]

1. Remove the cutting mat with the aid of a sharp object at the cutting mat removal groove.
2. The left and right sides of the cutting mat can be reversed, and both side can be used, so that it can be used in a total 4 positions.  
(When it has become damaged from the blade in all 4 positions, replace it).

## [Replacement of Blade]

1. Remove the screws and take off the holder.
2. Open the empty cutter replacement case, place side B of the case together with the blade in the holder, and remove the blade.  
Place the cutter in side B of the filled cutter replacement case together with the hexagonal part of the holder, and attach the blade.  
(Use the new empty blade replacement case for the next blade replacement.)



## WARNING !

- When replacing the blade, do not touch the blade edge directly.
- Remove metal-staples, paper clips, etc. before cutting.
- Do not cut metal film, film containing glass fiber, etc.
- Do not cut more sheets of paper than the cutting capacity allows.

## CARL PAPER TRIMMER SERIES

Item No.	DC-210	DC-220	DC-230	DC-250
Cutting capacity (80gsm paper)	32 Sheets (Straight Blade) 3 Sheets (Perforation Blade)	32 Sheets (Straight Blade) 3 Sheets (Perforation Blade)	32 Sheets (Straight Blade) 3 Sheets (Perforation Blade)	20 Sheets (Straight Blade) 3 Sheets (Perforation Blade)
Cutting length	A4   310 mm	B4   375 mm	A3   430 mm	A2   653 mm

**CARL** MFG. CO., LTD.  
TOKYO JAPAN